

2024 / 25 / 26

THE NEXT GENERATION OF  
AFFORDABLE MODULAR FIXTURING



**BUILDPRO**<sup>®</sup>  
Welding Tables

[www.BuildproTables.com](http://www.BuildproTables.com)

**Strong  
Hand**  
Tools



# THE ONLY MODULAR HEAVY DUTY WELDING TABLE

The NEW Alpha 28 is the only Modular Heavy Duty Welding Table with positionable, self-locating, reversible Table Plates for unlimited possibilities in Heavy Duty Fixturing for Welding and Fabrication. Accurately locate, position and clamp stock for higher quality welding.

Table Plates are made from tough P20 low alloy tool steel and ground for flatness.

QPQ Nitriding Treatment provides corrosion and weld spatter resistance for superior performance and wear with 58-62 HRC case hardness.

Self-locating Table Plates can be repositioned, then easily realigned to the original position. Reposition the table plates as needed to increase the width of the table for oversized or complex fixtures.



Each Heavy Duty Table leg supports 4,400 lb [2,000 kg].

2X Life! Alpha 28 Table Plates can be reversed to provide a new work surface.



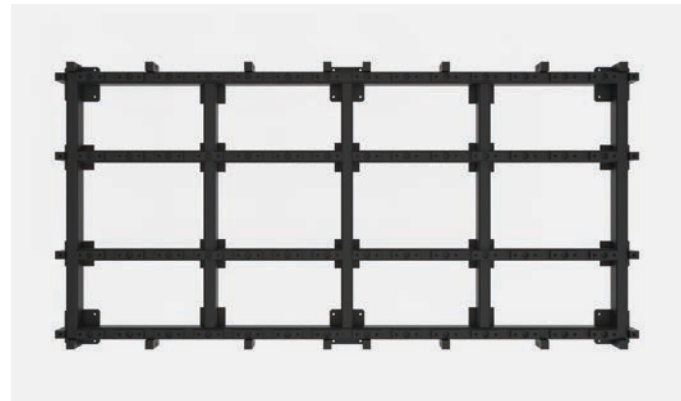
BuildPro® Engineers developed the Alpha 28 line by customer demand for an affordable, heavy duty, Welding Table. The five-face Alpha 28 Table is the optimal solution for precision vertical and horizontal fixturing to expand your capabilities in welding and fabrication.

Each plate is made from a low alloy tool steel that's tough enough for use in the mold making industry. After surface grinding and machining, each plate is further enhanced with a QPQ nitriding process that improves hardness, corrosion resistance, and resistance to weld spatter.

Plates on the table can be repositioned, or removed as applications dictate; a plate locating system means the spacing of the holes are always within tolerance without the need for special re-calibration.

The unique and versatile Alpha 28 tables are complemented by a complete range of modular fixtures and clamping accessories.

Visit our website to see the latest additions to the Alpha 28 product line and access technical details such as CAD drawings.



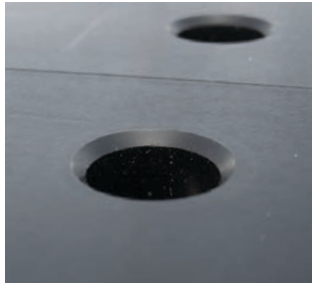
Alpha 28 tables combine the rigidity and accuracy of a welded and machined frame with the flatness of precision ground, CNC machined plates.



The Locating Bushing design allows you to easily remove, re-position, re-align, and reverse the table plates. Table Plates can be positioned to create the custom work surface configuration required for each unique fixturing application.



## SYSTEM OVERVIEW

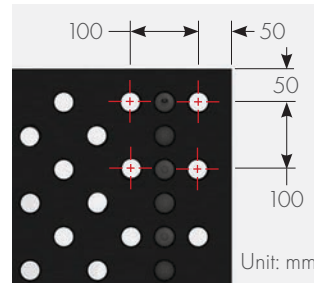


### SYSTEM BOREHOLE

Hole Diameter:  $28 +0.20/-0$  mm

Hole Spacing:  $100 \pm 0.05$  mm

Large chamfer on top for easy insertion. Chamfer on underside as well to maximize bolt clamping force.



### TABLE SURFACE

Table Flatness:  
 $\pm 0.125$  mm per 600 x 600 mm  
( $\pm 0.005$ " per 24" x 24")

Material: P20

Surface Hardness: 58-62 HRC

Base Material Hardness:  
25.1-29.6 HRC

Borehole spacing 100 mm with additional 100 mm grid offset by 50 mm in the x and y axis, aka diagonal grid.



Alpha 28 tables feature 6 legs compared to competitors' 4 legs on 2.4 x 1.2 and 2.0 x 1.0 table sizes for greater rigidity and flatness

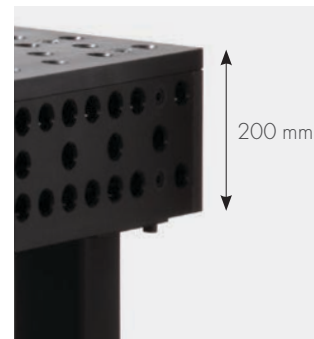


### MATERIAL THICKNESS

Plate Thickness:  $25 \pm 0.06$  mm

Tabletop Finish: Nitrided (Heat-Treated)

Coefficient of Friction: 0.37

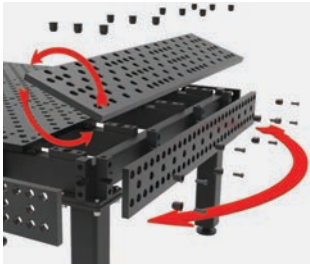


### TABLE SIDE PANEL

Material: Q345B

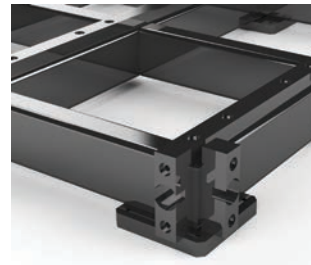
Hardness: 50-55 HRC

200 mm high



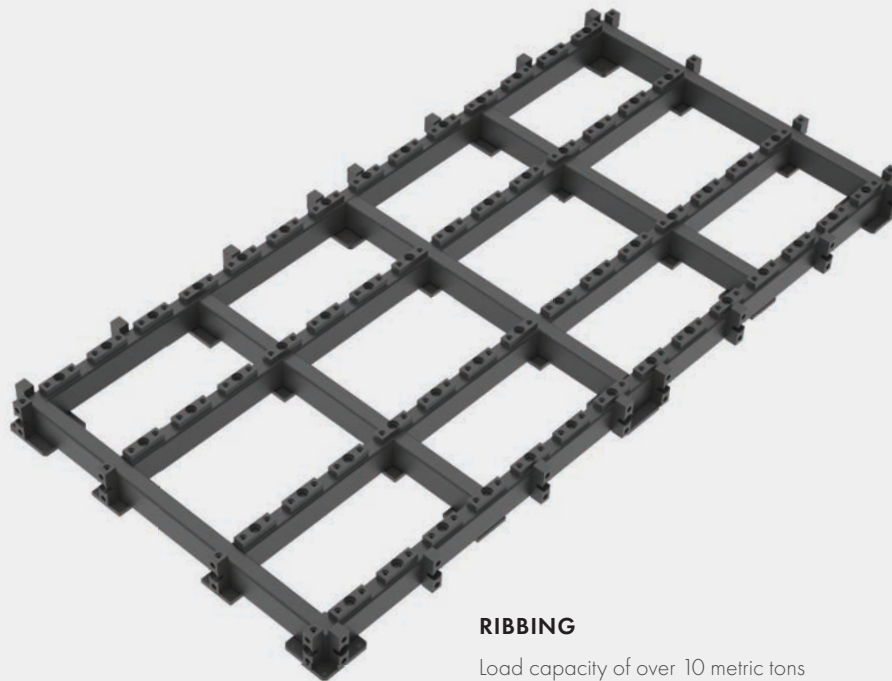
**SELF-LOCATING SYSTEM FOR TOP AND SIDE PLATES**

Locating features in the table frame and plate combine with our locator bushings for self alignment.



**PLATE MOUNTING DETAIL FOR SIDE PLATES**

Side Plates also use self locating bushing system.

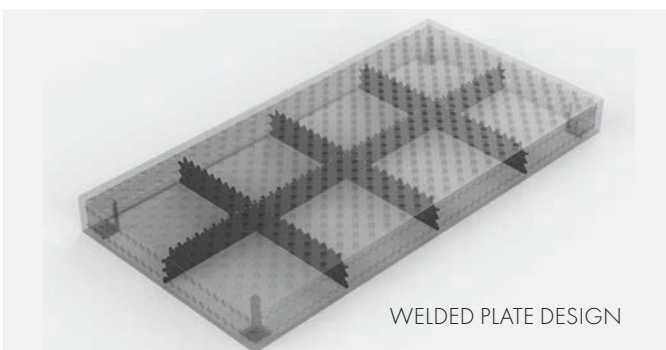


**RIBBING**

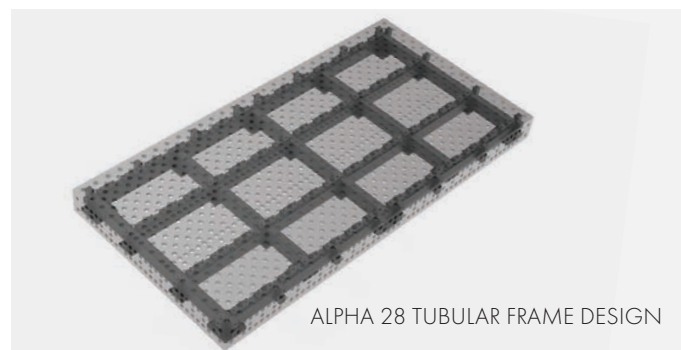
Load capacity of over 10 metric tons

**STRONGER, MORE RIGID FRAME**

The machined tubular frame construction of the Alpha 28 table provides improved flatness and torsional stiffness compared to plate only frames. The rigid frame with modular plates on the Alpha 28 means less high spots and less twisting compared to welded plate designs. The welded construction of a plate only design often leads to distortion and high spots around the corners and center.



WELDED PLATE DESIGN



ALPHA 28 TUBULAR FRAME DESIGN

## 1.2 X 1.2 FIVE FACE TABLE



### TABLETOP + FIXED LENGTH LEGS

PART NO.	INCLUDES LEG	TABLE SURFACE HEIGHT (MM)	CAPACITY (KG)	GROSS WEIGHT (KG)
T28-1212XQ-A1	T28-81007	850	4,000	579
T28-1212XQ-A2	T28-81005	700	4,000	577
T28-1212XQ-A3	T28-81004	600	4,000	574



### TABLETOP + HEIGHT-ADJUSTABLE LEGS 550 ~ 900 mm

PART NO.	INCLUDES LEG	TABLE SURFACE HEIGHT (MM)	CAPACITY (KG)	GROSS WEIGHT (KG)
T28-1212XQ-B1	T28-82009	750 ~ 1,100	4,000	622



### TABLETOP + HEIGHT-ADJUSTABLE LEGS + CASTER & LOCKING BRAKE 550 ~ 750 mm

PART NO.	INCLUDES LEG	TABLE SURFACE HEIGHT (MM)	CAPACITY (KG)	GROSS WEIGHT (KG)
T28-1212XQ-C1	T28-82407	750 ~ 950	3,200	668



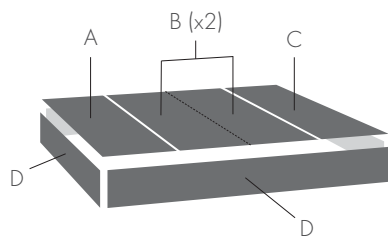
### TABLETOP + FIXED LENGTH LEGS + CASTER & LOCKING BRAKE 650 mm

PART NO.	INCLUDES LEG	TABLE SURFACE HEIGHT (MM)	CAPACITY (KG)	GROSS WEIGHT (KG)
T28-1212XQ-C2	T28-81406	850	3,200	625



### TABLETOP ONLY (no leg)

PART NO.	DIMENSION (MM)	GROSS WEIGHT (KG)
T28-1212XQ-N	1,200 x 1,200 x 200	560



### REVERSIBLE TABLE PLATES

REF.	PART NO.	DIMENSION (MM)	WEIGHT (KG)
A	T28-Y12000275X-01	1,200 x 275	56.3
B	T28-Y12000300X-02	1,200 x 300	60.8
C	T28-Y12000325X-03	1,200 x 325	66.7
D	T28-Y11750175X-07	1,175 x 175	33.1



#### TABLETOP + FIXED LENGTH LEGS

PART NO.	INCLUDES LEG	TABLE SURFACE HEIGHT (MM)	CAPACITY (KG)	GROSS WEIGHT (KG)
T28-1510XQ-A1	T28-81007	850	4,000	631
T28-1510XQ-A2	T28-81005	700	4,000	629
T28-1510XQ-A3	T28-81004	600	4,000	626



#### TABLETOP + HEIGHT-ADJUSTABLE LEGS 550 ~ 900 mm

PART NO.	INCLUDES LEG	TABLE SURFACE HEIGHT (MM)	CAPACITY (KG)	GROSS WEIGHT (KG)
T28-1510XQ-B1	T28-82009	750 ~ 1,100	4,000	674



#### TABLETOP + HEIGHT-ADJUSTABLE LEGS + CASTER & LOCKING BRAKE 550 ~ 750 mm

PART NO.	INCLUDES LEG	TABLE SURFACE HEIGHT (MM)	CAPACITY (KG)	GROSS WEIGHT (KG)
T28-1510XQ-C1	T28-82407	750 ~ 950	3,200	720



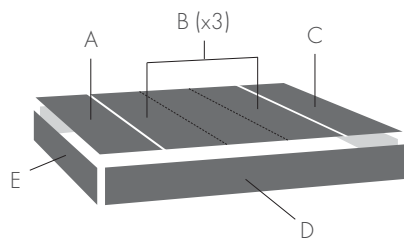
#### TABLETOP + FIXED LENGTH LEGS + CASTER & LOCKING BRAKE 650 mm

PART NO.	INCLUDES LEG	TABLE SURFACE HEIGHT (MM)	CAPACITY (KG)	GROSS WEIGHT (KG)
T28-1510XQ-C2	T28-81406	850	3,200	678



#### TABLETOP ONLY (no leg)

PART NO.	DIMENSION (MM)	GROSS WEIGHT (KG)
T28-1510XQ-N	1,500 x 1,000 x 200	612



#### REVERSIBLE TABLE PLATES

REF.	PART NO.	DIMENSION (MM)	WEIGHT (KG)
A	T28-Y10000325X-01	1,000 x 325	55.5
B	T28-Y10000300X-02	1,000 x 300	50.6
C	T28-Y10000275X-01	1,000 x 275	46.8
D	T28-Y14750175X-07	1,475 x 175	41.5
E	T28-Y09750175X-07	975 x 175	27.5

## 2.0 X 1.0 FIVE FACE TABLE



### TABLETOP + FIXED LENGTH LEGS

PART NO.	INCLUDES LEG	TABLE SURFACE HEIGHT (MM)	CAPACITY (KG)	GROSS WEIGHT (KG)
T28-2010XQ-A1	T28-81007	850	6,000	925
T28-2010XQ-A2	T28-81005	700	6,000	922
T28-2010XQ-A3	T28-81004	600	6,000	917



### TABLETOP + HEIGHT-ADJUSTABLE LEGS 550 ~ 900 mm

PART NO.	INCLUDES LEG	TABLE SURFACE HEIGHT (MM)	CAPACITY (KG)	GROSS WEIGHT (KG)
T28-2010XQ-B1	T28-82009	750 ~ 1,100	6,000	988



### TABLETOP + HEIGHT-ADJUSTABLE LEGS + CASTER & LOCKING BRAKE 550 ~ 750 mm

PART NO.	INCLUDES LEG	TABLE SURFACE HEIGHT (MM)	CAPACITY (KG)	GROSS WEIGHT (KG)
T28-2010XQ-C1	T28-82407	750 ~ 950	4,800	1,057



### TABLETOP + FIXED LENGTH LEGS + CASTER & LOCKING BRAKE 650 mm

PART NO.	INCLUDES LEG	TABLE SURFACE HEIGHT (MM)	CAPACITY (KG)	GROSS WEIGHT (KG)
T28-2010XQ-C2	T28-81406	850	4,800	994

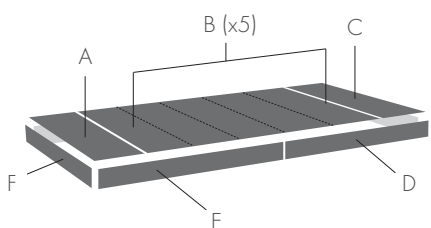


### TABLETOP ONLY (no leg)

PART NO.	DIMENSION (MM)	GROSS WEIGHT (KG)
T28-2010XQ-N	2,000 x 1,000 x 200	896

### REVERSIBLE TABLE PLATES

REF.	PART NO.	DIMENSION (MM)	WEIGHT (KG)
A	T28-Y10000225X-03	1,000 x 225	38.6
B	T28-Y10000300X-02	1,000 x 300	50.5
C	T28-Y10000275X-01	1,000 x 275	46.8
D	T28-Y09750175X-07	975 x 175	27.5
E	T28-Y10250175X-05	1,025 x 175	28.8
F	T28-Y09500175X-06	950 x 175	26.7







#### TABLETOP + FIXED LENGTH LEGS

PART NO.	INCLUDES LEG	TABLE SURFACE HEIGHT (MM)	CAPACITY (KG)	GROSS WEIGHT (KG)
T28-2412XQ-A1	T28-81007	850	6,000	1,126
T28-2412XQ-A2	T28-81005	700	6,000	1,123
T28-2412XQ-A3	T28-81004	600	6,000	1,118



#### TABLETOP + HEIGHT-ADJUSTABLE LEGS 550 ~ 900 mm

PART NO.	INCLUDES LEG	TABLE SURFACE HEIGHT (MM)	CAPACITY (KG)	GROSS WEIGHT (KG)
T28-2412XQ-B1	T28-82009	750 ~ 1,100	6,000	1,188



#### TABLETOP + HEIGHT-ADJUSTABLE LEGS + CASTER & LOCKING BRAKE 550 ~ 750 mm

PART NO.	INCLUDES LEG	TABLE SURFACE HEIGHT (MM)	CAPACITY (KG)	GROSS WEIGHT (KG)
T28-2412XQ-C1	T28-82407	750 ~ 950	4,800	1,258



#### TABLETOP + FIXED LENGTH LEGS + CASTER & LOCKING BRAKE 650 mm

PART NO.	INCLUDES LEG	TABLE SURFACE HEIGHT (MM)	CAPACITY (KG)	GROSS WEIGHT (KG)
T28-2412XQ-C2	T28-81406	850	4,800	1,195

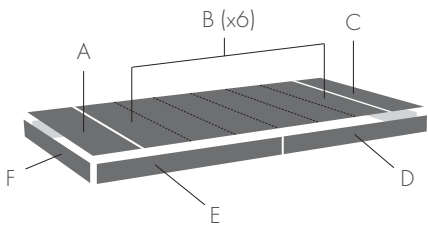


#### TABLETOP ONLY (no leg)

PART NO.	DIMENSION (MM)	GROSS WEIGHT (KG)
T28-2412XQ-N	2,400 x 1,200 x 200	1,096

#### REVERSIBLE TABLE PLATES

REF.	PART NO.	DIMENSION (MM)	WEIGHT (KG)
A	T28-Y12000275X-01	1,200 x 275	56.3
B	T28-Y12000300X-02	1,200 x 300	60.8
C	T28-Y12000325X-03	1,200 x 325	66.7
D	T28-Y11750175X-07	1,175 x 175	33.1
E	T28-Y12250175X-05	1,225 x 175	34.4
F	T28-Y11500175X-06	1,150 x 175	32.3



## 3.0 X 1.5 FIVE FACE TABLE



### TABLETOP + FIXED LENGTH LEGS

PART NO.	INCLUDES LEG	TABLE SURFACE HEIGHT (MM)	CAPACITY (KG)	GROSS WEIGHT (KG)
T28-3015XQ-A1	T28-81007	850	6,000	1,588
T28-3015XQ-A2	T28-81005	700	6,000	1,585
T28-3015XQ-A3	T28-81004	600	6,000	1,580



### TABLETOP + HEIGHT-ADJUSTABLE LEGS 550 ~ 900 mm

PART NO.	INCLUDES LEG	TABLE SURFACE HEIGHT (MM)	CAPACITY (KG)	GROSS WEIGHT (KG)
T28-3015XQ-B1	T28-82009	750 ~ 1,100	6,000	1,650



### TABLETOP + HEIGHT-ADJUSTABLE LEGS + CASTER & LOCKING BRAKE 550 ~ 750 mm

PART NO.	INCLUDES LEG	TABLE SURFACE HEIGHT (MM)	CAPACITY (KG)	GROSS WEIGHT (KG)
T28-3015XQ-C1	T28-82407	750 ~ 950	4,800	1,720



### TABLETOP + FIXED LENGTH LEGS + CASTER & LOCKING BRAKE 650 mm

PART NO.	INCLUDES LEG	TABLE SURFACE HEIGHT (MM)	CAPACITY (KG)	GROSS WEIGHT (KG)
T28-3015XQ-C2	T28-81406	850	4,800	1,656

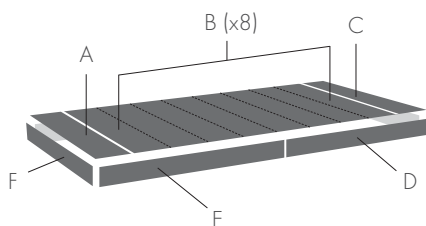


### TABLETOP ONLY (no leg)

PART NO.	DIMENSION (MM)	GROSS WEIGHT (KG)
T28-3015XQ-N	3,000 x 1,500 x 200	1,558

### REVERSIBLE TABLE PLATES

REF.	PART NO.	DIMENSION (MM)	WEIGHT (KG)
A	T28-Y15000325X-03	1,500 x 325	82.4
B	T28-Y15000300X-02	1,500 x 300	75.0
C	T28-Y15000275X-01	1,500 x 275	69.5
D	T28-Y14750175X-07	1,475 x 175	41.5
E	T28-Y15250175X-05	1,525 x 175	42.8
F	T28-Y14500175X-06	1,450 x 175	40.7



Alpha 28 Welding Tables come with a wide range of mounting options to suit every workspace. Legs are ordered individually and the quantity required will vary depending on table size.

Legs mount onto plates at the bottom of the table; to calculate height of work surface add the height of the leg and the height of the table together. For example, the 650 mm Fix Length Leg combined with a table height of 200 mm results in a 850 mm high work surface. Leveling feet with spindles at the bottom of the legs offer fine adjustment and leveling.



T28-81004



T28-81005



T28-81007



T28-82009



T28-81406



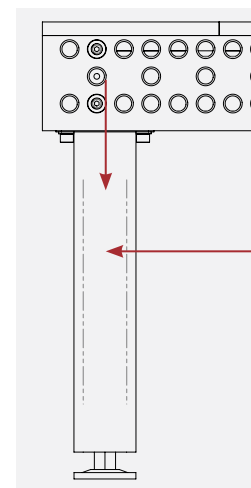
T28-82407

PART NO.	DESCRIPTION	HEIGHT (MM)	SPINDLE ADJ. RANGE (MM)	STATIC LOAD CAPACITY (KG)	WEIGHT (KG)
T28-81004	400 mm H fixed length	400	50	2,000	11.5
T28-81005	500 mm H fixed length	500	50	2,000	12.5
T28-81007	650 mm H fixed length	650	50	2,000	14.0
T28-82009	Height - adjustable 550 - 900 mm	550 ~ 900	50	2,000	18.5
T28-81406	Fixed leg with Caster and Locking Brake 650 mm	650	20	800	16.5
T28-82407	Height - adjustable with Caster and Locking Brake 550 - 750	550 ~ 750	20	800	20.5



#### INSTALLATION TABLE LEGS:

Four M12 hex drive cap screws and washers are included with each leg.



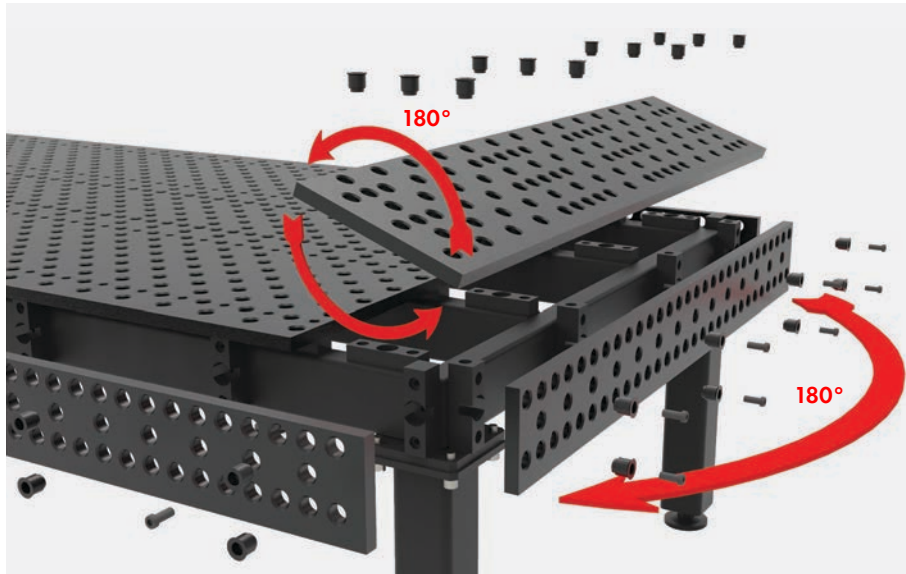
#### MAXIMUM SAFE BEARING LOAD:

Vertical force direction:  
20 kN

Horizontal force direction:  
2 kN

Maximum stability  
ensured by large section  
tube (100 x 100 mm).

## TABLE MOUNTING SET



T28-93011-12K

PART NO.	DESCRIPTION	WEIGHT (KG)
T28-93011-12K	12 pc. of Locating Bushing, 28 O.D 12 pc. of Mounting Socket Head Cap Screws, M12 x 30	3.6

## ANCHORING PAD

These pads can be used in place of leveling feet and include a plate flange with two 18 mm diameter holes for anchoring your table down to the floor.



T28-81304-01

PART NO.	L X W X H (MM)	PAD THICKNESS (MM)	THREAD	2X MOUNTING HOLES (MM)	HOLE SPACING (MM)	WEIGHT (KG)
T28-81304-01	188 x 130 x 132	10	M30	Ø18	150	2.4



STRAIGHT EDGE STOPS

Stops are used to align work pieces anywhere on the table. Slots provide adjustment while holes provide anchoring points for accessories such as clamps and V-Blocks.



T28-22155



T28-20255



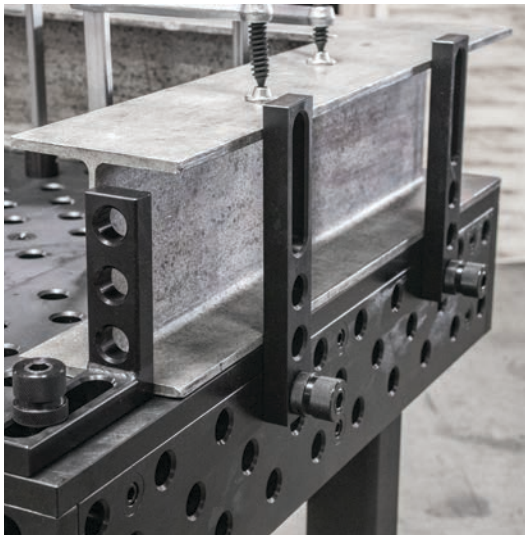
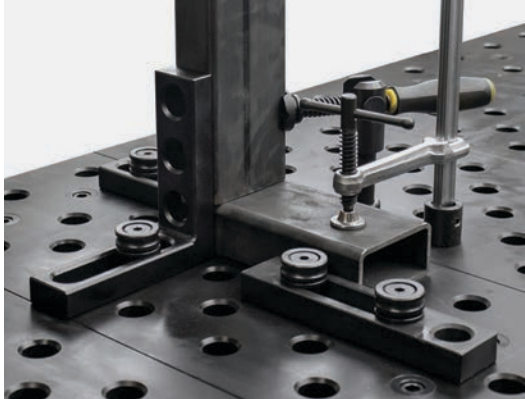
T28-20301



T28-20501



T28-20751



PART NO.	DESCRIPTION	LENGTH (MM)	WIDTH (MM)	THICKNESS (MM)	SLOT LENGTH (MM)	WEIGHT (KG)
T28-22155	Straight Stop 150 SL	150	50	25	100	0.8
T28-20255	Straight Stop 225 SLH	225	50	25	100	1.4
T28-20301	Straight Stop 325 SLH	325	50	25	100	2.1
T28-20501	Straight Stop 500 W-SLH	500	100	25	200	7.9
T28-20751	Straight Stop 750 W-SLH	750	100	25	200	12.1

## STOPS

### OTHER STOPS

Eccentric Stops provide infinite adjustment in a compact package. Item T28-27060 can also be used as a ground connection and features an M10 thread.

Flat Angles provide a broad adjustable stopping surface and an alternate, compact method of creating right angle fixtures.



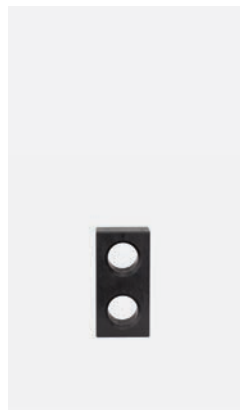
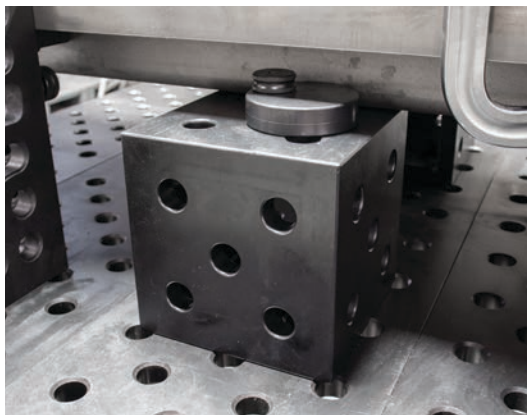
T28-27060



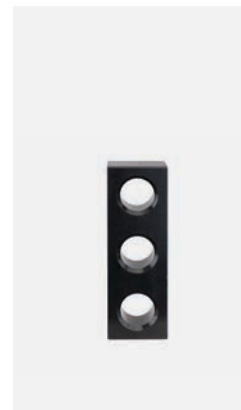
T28-27100



T28-28204



T28-21105



T28-21155



T28-21255

PART NO.	DESCRIPTION	LENGTH (MM)	WIDTH (MM)	THICKNESS (MM)	WEIGHT (KG)
T28-27060	Eccentric Stop, adjust range 19.5 ~ 39.5 mm	--	Ø: 60	25	0.4
T28-27100	Eccentric Stop, adjust range 24 ~ 74 mm	--	Ø: 100	25	1.4
T28-28204	Flat Angle 200 H - 200 SL	200	200	25	1.9
T28-21105	Straight Stop 100 H	100	50	25	0.8
T28-21155	Straight Stop 150 H	150	50	25	1.1
T28-21255	Straight Stop 250 H	250	50	25	1.8

Angle Squares can be used in the same manner as a stop or combined with other elements to form more complex fixtures. Slots enable a range of adjustable options.



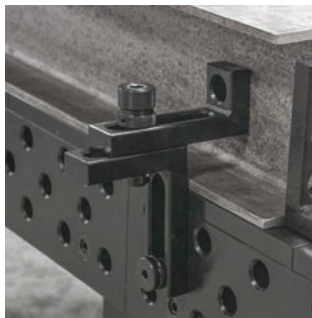
T28-24081



T28-23081



T28-23181



T28-23183



T28-24183



T28-25183



T28-23283.1

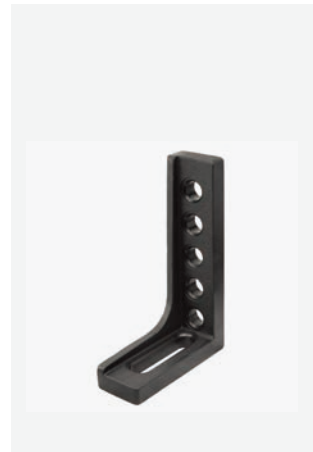
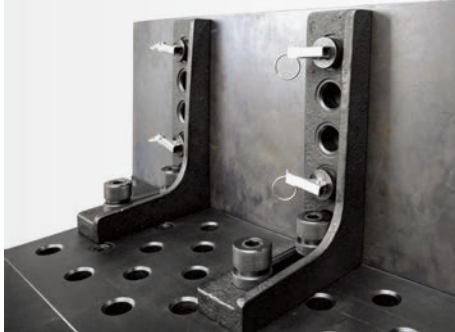


T28-12018

PART NO.	DESCRIPTION	LENGTH (MM)	WIDTH (MM)	HEIGHT (MM)	THICKNESS (MM)	WEIGHT (KG)
T28-24081	Angle Square, 75 H - 75 H	75	50	75	25	1.0
T28-23081	Mounting Square, 75 W - 75 W	75	150	75	25	2.9
T28-23181	Angle Square, 75 H - 175 SL	175	50	75	25	1.4
T28-23183	Angle Square, 175H - 175 SL	175	50	175	25	2.0
T28-24183	Angle Square, 175 H - 175 H	175	50	175	25	2.4
T28-25183	Angle Square, 175 SL - 175 SL	175	50	175	25	1.8
T28-23283.1	Angle Square, 175 H - 275 SL	275	50	175	25	2.5
T28-12018	Angle Square, 200 H - 175 SL	175	50	200	25	2.7

## CAST ANGLE SQUARES

Cast Angle Squares are manufactured from high quality ductile cast iron. Their larger size and more robust construction allows them to stop larger parts and bear heavier loads when used as a table extension.



T28-23283



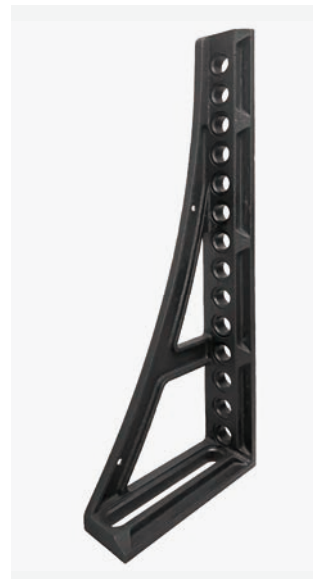
T28-23504



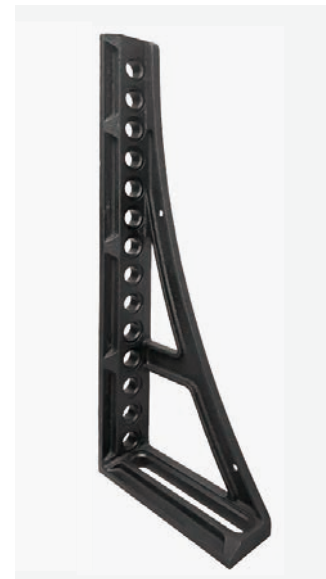
T28-23506L



T28-23506R



T28-23756L



T28-23756R

PART NO.	DESCRIPTION	LENGTH (MM)	WIDTH (MM)	HEIGHT (MM)	THICKNESS (MM)	WEIGHT (KG)
T28-23283	Cast Angle Square 275 - L	175	50	275	25	6.0
T28-23504	Cast Angle Square 500 - L	200	75	500	approx. 27	9.1
T28-23506L T28-23506R	HD Square 500, L/R	276	95	500	approx. 27	13.8
T28-23756L T28-23756R	HD Square 750, L/R	276	85	750	approx. 27	12.7



## HEAVY DUTY CAST SQUARES

Heavy Duty Cast Squares are manufactured from high quality ductile cast iron and specifically designed to handle heavy parts.

They serve equally well for stopping large parts, serving as table extensions, or building vertically. Cut outs are optimized for lighter weight and easier handling.

Squares come in two versions with machined faces on either the left or right side.



**T28-13028L**



**T28-13028R**



**T28-16038L**



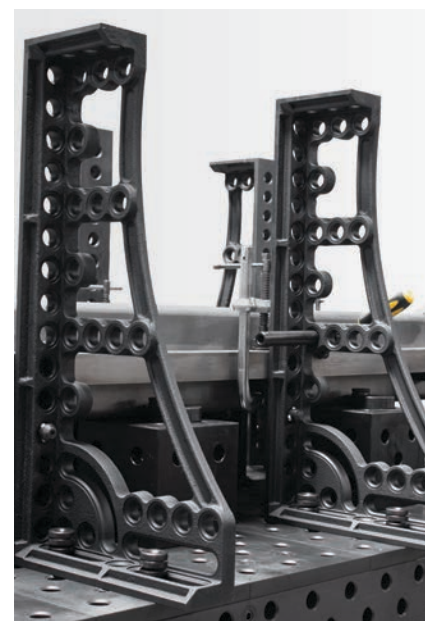
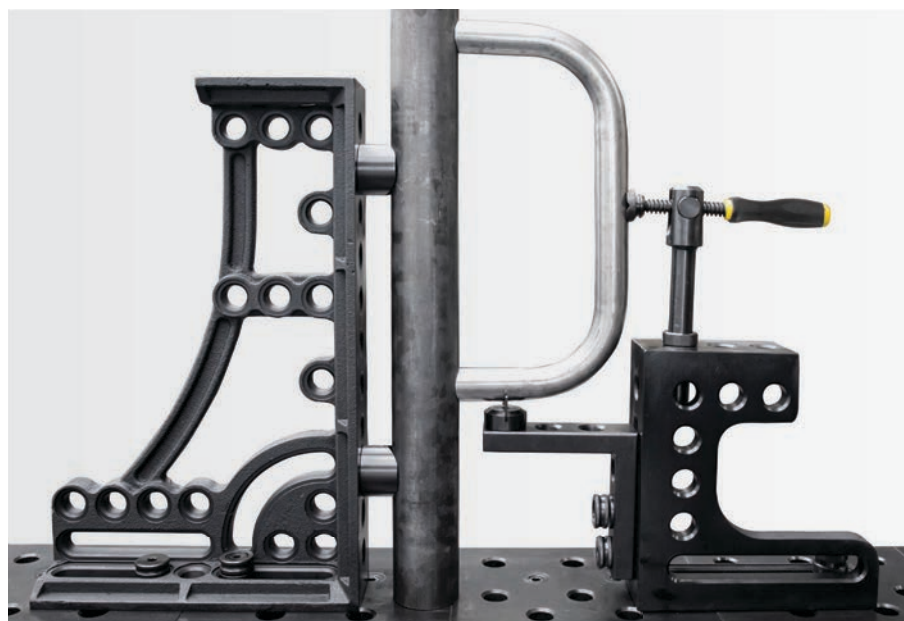
**T28-16038R**



**T28-18038L**



**T28-18038R**



PART NO.	DESCRIPTION	LENGTH (MM)	WIDTH (MM)	HEIGHT (MM)	THICKNESS (MM)	WEIGHT (KG)
T28-13028L T28-13028R	Heavy Duty Cast Square 300 - L/R	280	95	300	approx. 27	12.9
T28-16038L T28-16038R	HD Square 600, L/R	375	95	600	approx. 27	22.5
T28-18038L T28-18038R	HD Square 800, L/R	375	95	800	approx. 27	27.0

## SQUARES

Slotted Square and Sliding Base provide heavy duty adjustment options for special applications.

The Sliding Base should be bolted to the table with a Low Profile Clamping Bolt, item T28-46350 to ensure proper clearance between the base and clamping square when sliding.



T28-15010



T28-93530

The Frame Square features bore holes on a 50 mm grid with slots. Two versions with stops on either left or right side.



T28-32103L



T28-32103R

PART NO.	DESCRIPTION	LENGTH (MM)	WIDTH (MM)	HEIGHT (MM)	WEIGHT (KG)
T28-15010	Slotted Adj. Square, C 500	500	100	100	16
T28-93530	Sliding Base	350	300	50	16
T28-32103L	Frame Square, 300, L	300	200	100	19.5
T28-32103R	Frame Square, 300, R	300	200	100	19.5

Extension Blocks are ideally suited as table extensions or for joining multiple tables together for long projects. Extension Blocks are hardened.

Only Extension Block T28-32202 has slots.

Extension Blocks 500 mm and longer in length have leg mounting holes, and all blocks over 500 mm in length should be supported by legs when used as a table extension.

Visit our product website for more information about mounting legs onto Extension Blocks.

**SAFETY NOTE:** Extension Blocks should only be joined to the table using Connecting Bolts (Item T28-48250 or T28-48750). Do not use Fast Clamping Bolts or other available bolts to join.



**T28-32202**



**T28-32205**



**T28-32210**



**T28-32212**



**T28-32215**



**T28-32224**



**T28-32230**

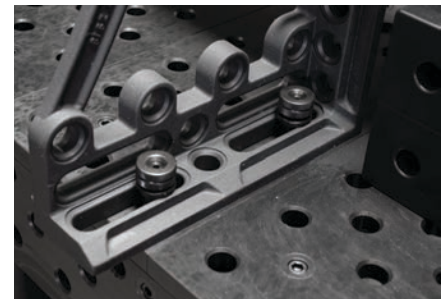
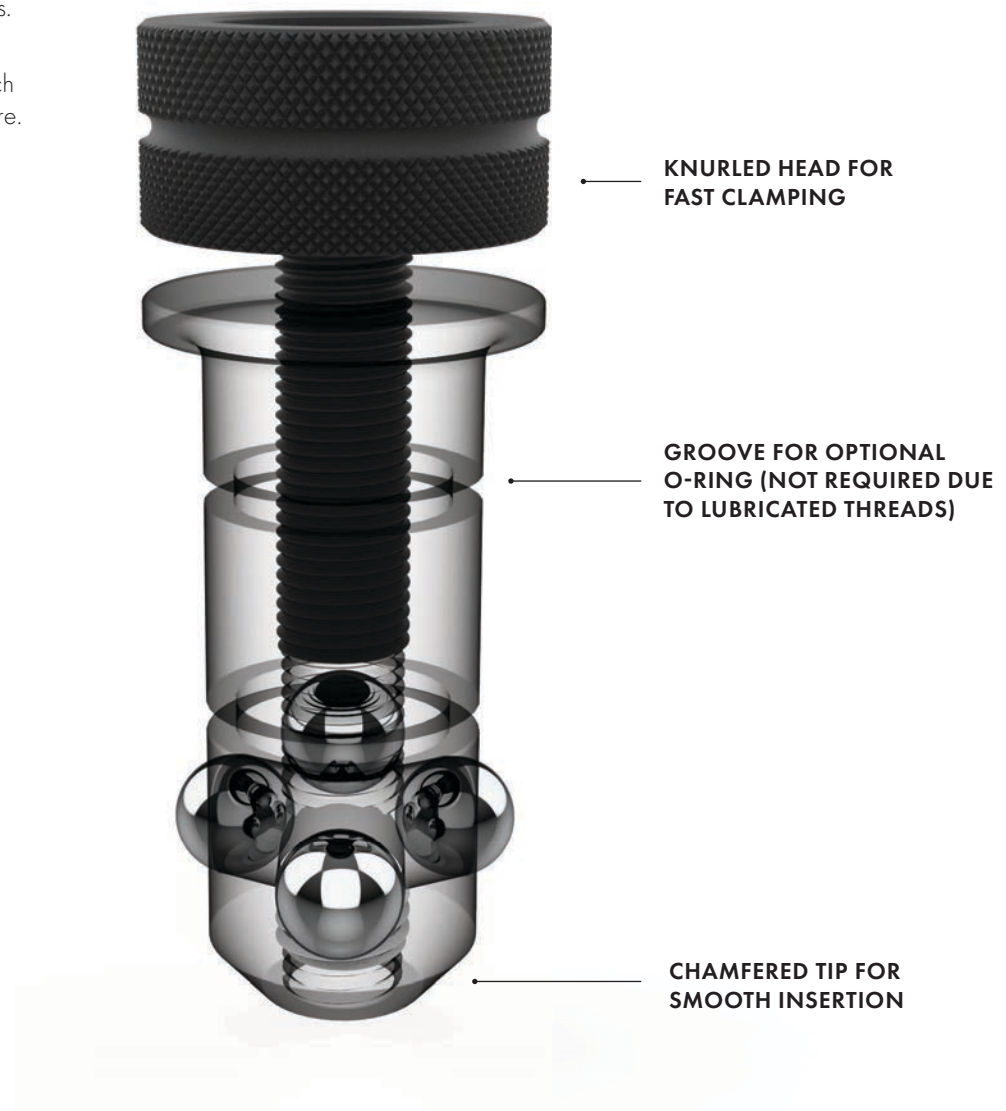
PART NO.	DESCRIPTION	LENGTH (MM)	WIDTH (MM)	HEIGHT (MM)	WEIGHT (KG)
T28-32202	Extension Block 200 x 200 x 200	200	200	200	27.7
T28-32205	Extension Block 500 x 200 x 200	500	200	200	62
T28-32210	Extension Block 1,000 x 200 x 200	1,000	200	200	109.5
T28-32212	Extension Block 1,200 x 200 x 200	1,200	200	200	128
T28-32215	Extension Block 1,500 x 200 x 200	1,500	200	200	160
T28-32224	Extension Block 2,400 x 200 x 200	2,400	200	200	257.6
T28-32230	Extension Block 3,000 x 200 x 200	3,000	200	200	324

### BALL LOCK BOLTS

All bolts come in short and long versions.

Short bolts are designed for connecting two Alpha 28 components together such as a table to a stop or a stop to a square.

Long bolts are designed for connecting three Alpha 28 components together.





**T28-46450****T28-46475****T28-47550****T28-47575****T28-47455****T28-46350****T28-46375****T28-46650****T28-46675**

PART NO.	TYPE	LENGTH (MM)	DIA. (MM)	WEIGHT (KG)	NOTES
T28-46450	Fast Clamping Bolt, Short	95	28	0.5	Standard bolt for use when combining 2 components
T28-46475	Fast Clamping Bolt, Long	120	28	0.7	Standard bolt for use when combining 3 components
T28-47550	Universal Bolt, Short	84	28	0.4	42 ~ 57 mm clamping range. For clamping 2 components
T28-47575	Universal Bolt, Long	108	28	0.6	47 ~ 82 mm clamping range. For clamping 3 components
T28-47455	Universal Bolt w/ Collar, Short	106	28	0.6	45 ~ 53 mm clamping zone. For clamping 2 components
T28-46350	Flat Clamping Bolt, Short	74	28	0.4	Low profile bolt for use in oblong holes such as for sliding base plate
T28-46375	Fast Clamping Bolt, Flat, Long	99	28	0.5	For clamping 3 components
T28-46650	Flush Mounted Bolt, Short	67	28	0.3	Flush Mount head not suitable for placement in oblong slots
T28-46675	Flush Mount Bolt, Long	91	28	0.4	Flush Mount head not suitable for placement in oblong slots

## LOCATING PIN

Quick positioning bolt for applications where clamping force is not required.

PART NO.	LENGTH (MM)	DIA. (MM)	WEIGHT (KG)
T28-49550	70	28	0.4

**T28-49550**

## CONNECTING BOLTS

The only bolt permitted for joining heavy parts such as Extension Blocks to tables.



T28-48235



T28-48250



T28-48275



T28-48750

PART NO.	DESCRIPTION	LENGTH (MM)	DIA. (MM)	WEIGHT (KG)	NOTES
T28-48235	Low Profile Connecting Bolt	61	28	0.3	For connecting tables or extension blocks to each other where fastener access is limited
T28-48250	Flush Mount Connecting Bolt, Short	50	28	0.1	For joining 2 standard fixtures to each other where strength and 1 completely flush connection are required
T28-48275	Flush Mount Connecting Bolt, Long	75	28	0.2	For joining 3 standard fixtures to each other where strength and 1 completely flush connection are required
T28-48750	Connecting Bolt, Hex, Short	58	28	0.4	For joining 2 standard fixtures to each other where strength is required and fastener has free access

## MAGNETIC CLAMPING BOLTS

Magnetic Clamping Bolts enable fast clamping for pressure-sensitive parts like thin sheet metal as well as enclosed shapes.

T28-94280 features cam action for easier release of parts.

PART NO.	LENGTH (MM)	DIA. (MM)	WEIGHT (KG)
T28-94270	68	34	0.09
T28-94280	96	36	0.2



T28-94270



T28-94280



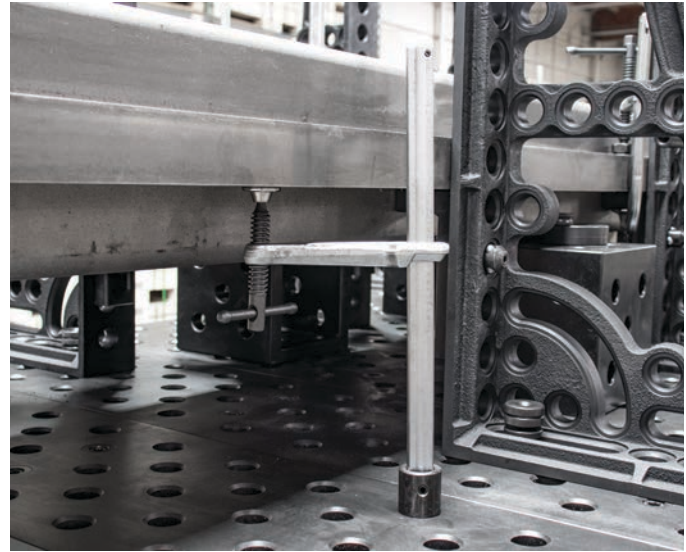
## INSERTA CLAMPS

Place the Inserta Clamp into the 28 mm holes on the Alpha 28 Tabletop.

PART NO.	CLAMPING CAPACITY (MM)	THROAT DEPTH (MM)	CLAMPING PRESSURE (KG)	RAIL SIZE (MM)	WEIGHT (KG)
T28-63130T	300	120	460	22 x 11	1.5
T28-64130T	300	178	350	25 x 12	2.2



T28-63130T



## INSERTA CLAMP W/ RATCHET HANDLE

The Ratchet Handle is ideal for tight space clamping, and the ratchet mechanism ensures rapid, vibration and torsion resistant clamping.

PART NO.	CLAMPING CAPACITY (MM)	THROAT DEPTH (MM)	CLAMPING PRESSURE (KG)	RAIL SIZE (MM)	WEIGHT (KG)
T28-63630	30 ~ 300	120	460	22 x 11	1.7



T28-63630



## A NEW HANDLE PROFILE FOR IMPROVED ERGONOMICS

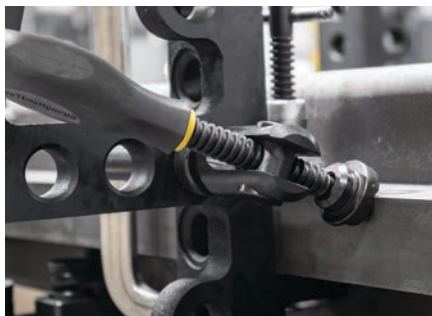
Not all handles are made the same, and not all handles provide the same amount of torque, leverage and comfort.

Our clamp handles have been completely re-designed for 2021, now featuring a new handle profile for improved ergonomics and a stronger grip when tightening down.

### T-POST PIPE CLAMP

The T-Post Pipe Clamp features horizontal and vertical adjustment as well as pivoting action at the spindle head. An adjustment ring at the base allows it to sit in a lower profile during welding as the round bar sits below the table or clamping square surface.

For HORIZONTAL clamping, remove the top arm from the clamp post, and place directly into the tabletop holes.



**HORIZONTAL CLAMPING**  
(T28-61416)



**T28-61416**

PART NO.	VERTICAL BAR HEIGHT (MM)	HORIZONTAL BAR LENGTH (MM)	WEIGHT (KG)
T28-61416	250	110	2.4



## CROSS POST BAR CLAMP

Versatile clamping systems ensure a clamp for your every need. All clamps easily set with one hand.

The Standard Screw Clamp adjusts by hand along the vertical and horizontal axis for precise placement anywhere on the table.



T28-64230

PART NO.	DESCRIPTION	VERTICAL BAR HEIGHT (MM)	HORIZONTAL BAR LENGTH (MM)	WEIGHT (KG)
T28-64230	Screw Clamp Standard	310	200, 40 ~ 165 Clamping Range	3.0

## BASIC BAR CLAMP

The Basic Bar Clamp is simplified version of the T-Post Pipe Clamp. The spindle on this clamp does not pivot and this feature is preferred by some users. The clamp arm can be removed from the vertical post to be used as a horizontal clamp.

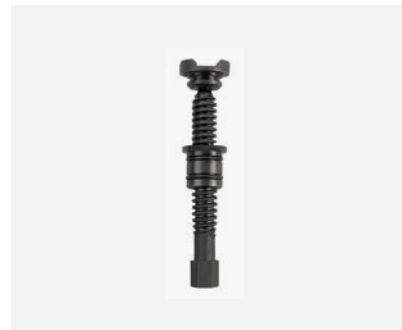


T28-61316

PART NO.	VERTICAL BAR HEIGHT (MM)	HORIZONTAL BAR LENGTH (MM)	WEIGHT (KG)
T28-61316	250	270, 40 ~ 210 Clamping Range	2.8

## HEX-CLAMPS, WITH NUT & PAD

The BuildPro Hex-Clamp with Inserta-bushing and spindle is excellent for clamping workpieces, using squares or other BuildPro components. The Hex-Clamp was designed to fasten a workpiece through a 28 mm bore hole. The spindle can be adjusted at the end with an open-end wrench or a hex wrench.



T28-61812

PART NO.	TRAPEZOID THREAD (MM)	THREAD LENGTH (MM)	WEIGHT (KG)
T28-61812	20 x 5	100	0.42
T28-61816	20 x 5	210	0.68

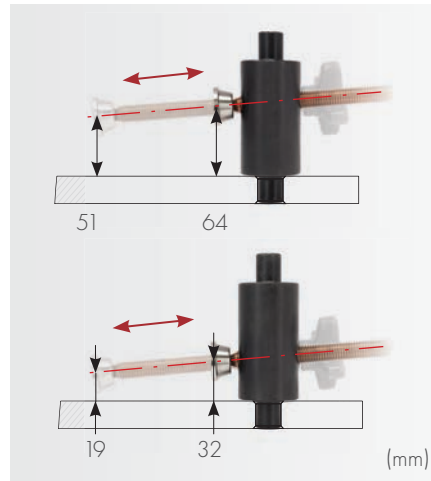
## CLAMPING TOOLS

### SIDE PUSH CLAMP

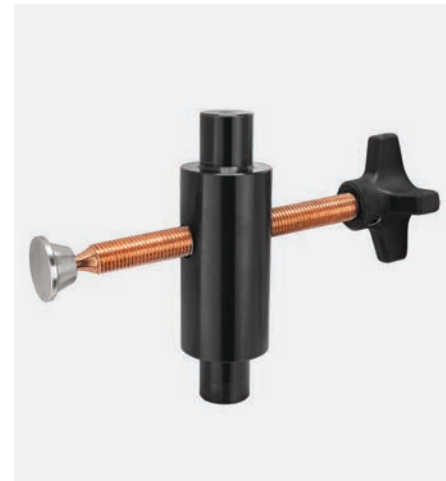
The Side Push Clamp is designed for applying lateral pressure with a slight down force to keep the workpiece from lifting or rolling upwards.

Extra long spindle insures you can reach anywhere on the table. Copper plated spindle resists weld spatter.

A special flipping feature ensures that you can always get the pad placed at the right height, which is useful for smaller material sizes.

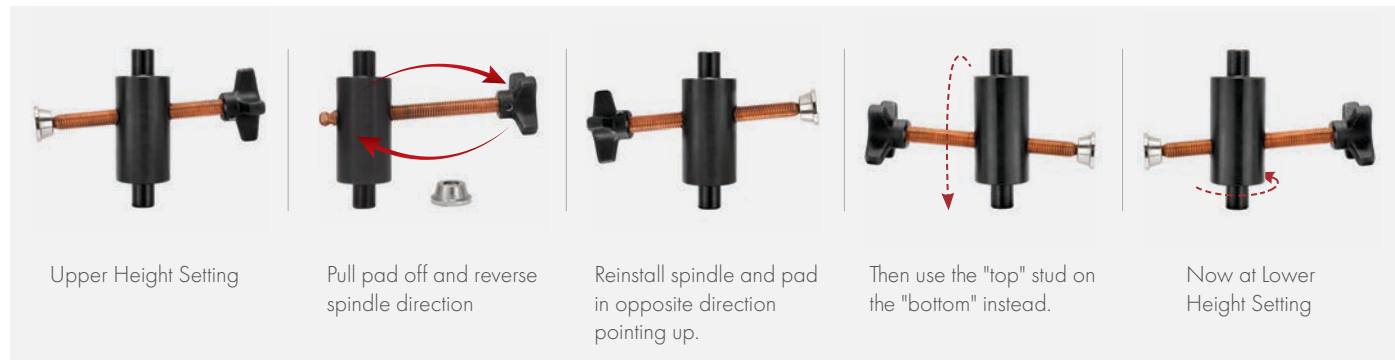


TWO HEIGHT SETTINGS



T28-75006

#### TO CHANGE THE HEIGHT OF THE CLAMP:



PART NO.	OVERALL LENGTH (MM)	CYLINDER HEIGHT (MM)	CYLINDER DIA. (MM)	STAMP DIA.(MM)	STROKE (MM)	WEIGHT (KG)
T28-75006	218	100	48	28	114	2.3

### INSERTA PLIERS

Table Mount C-Clamp for repetitive clamping. Clamping range can be set with adjusting screw.



T28-60010



T28-60012

PART NO.	DESCRIPTION	CLAMPING LENGTH (MM)	CLAMPING RANGE (MM)	LENGTH (MM)	WIDTH (MM)	HEIGHT (MM)	DIA. (MM)	WEIGHT (KG)
T28-60010	Inserta Pliers 100	100	5 ~ 75	340	30	150	28	1.2
T28-60012	Inserta Pliers 160	160	0 ~ 75	360	30	150	28	1.2

### REVOLVING HOOK CLAMP

This clamp allows precise placement of the clamping head on the workpiece and swings out of the way when unclamped. It is operated by a hex key on the top which moves the clamping arm up and down and allows the arm to swing freely when loose.

The clamp can be set down anywhere along its 90 degree swing. The clamp can also be used to push up instead of down.

PART NO.	DIMENSION (MM)	OPENING CAPACITY (MM)	WEIGHT (KG)
T28-60106	285.8 x 50.8 x 95.3	29 ~ 80	2.3



T28-60106

### CAM LOCK EDGE CLAMP

An excellent low profile option for locating or securing workpieces using lateral force to wedge or locate parts in place. This clamp provides better clearance of the workpiece when access is needed for additional welding or machining. It features a 100 mm slot for adjustable anchoring and a rotating CAM for applying lateral clamping pressure.

PART NO.	DIMENSION (MM)	CAM ADJUST RANGE (MM)	WEIGHT (KG)
T28-60510	222.3 x 50.8 x 44.5	0 ~ 8	1.8



T28-60510

### LOW PROFILE SIDE PUSH CLAMP

Compact yet mighty, this low-profile clamp is perfect for securing workpieces using lateral, and downward force. It provides excellent clearance of the workpiece when access is needed for additional welding or machining. It features a 100 mm slot for adjustable anchoring and a hex-driven rotating CAM that simultaneously applies lateral and downward clamping pressure.

PART NO.	DIMENSION (MM)	CAM RANGE (MM)	HEIGHT ADJUSTMENT (MM)	WEIGHT (KG)
T28-60500	203.2 x 50.8 x 25.4	0 ~ 1.7	10	1.2



T28-60500

## VERTICAL TOGGLE CLAMP W/ ADAPTER

Bar opens 105°, Handle 58°. Adapter base fits into all 28 mm holes. Works with various stops and squares such as T28-20255 and larger.

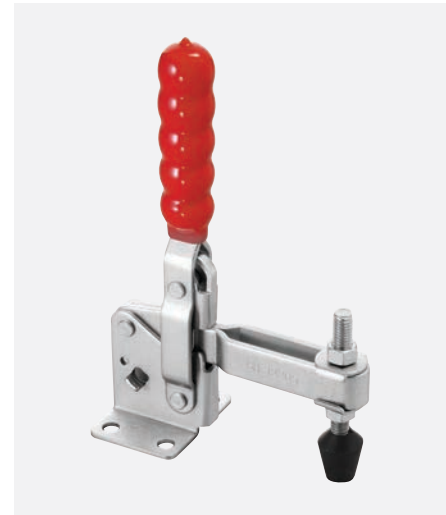
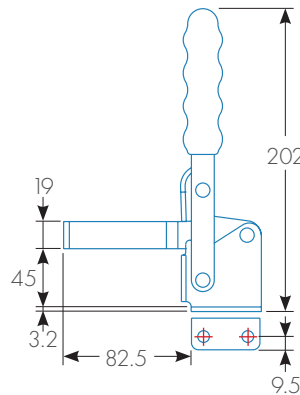
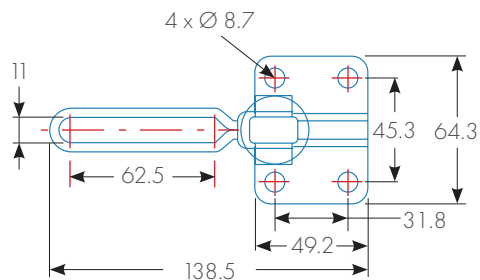


T28-97071

PART NO.	DIMENSION (MM)	HOLDING CAPACITY (KG)	WEIGHT (KG)
T28-97071	157 x 79 x 241	340	1.3

## VERTICAL HANDLE TOGGLE CLAMP

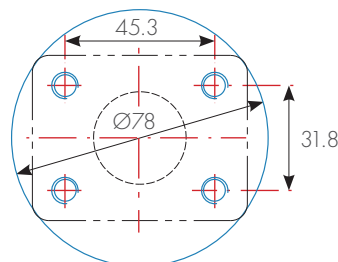
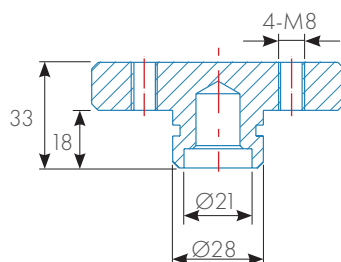
Hardened bushings and removable ground pins



GH12265

PART NO.	DESCRIPTION	WEIGHT (KG)
GH12265	Vertical Handle Toggle Clamp	0.6

## TOGGLE CLAMP MOUNTING ADAPTER

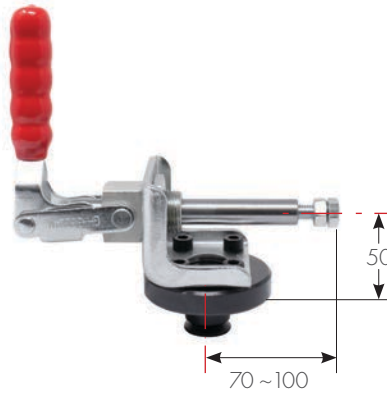
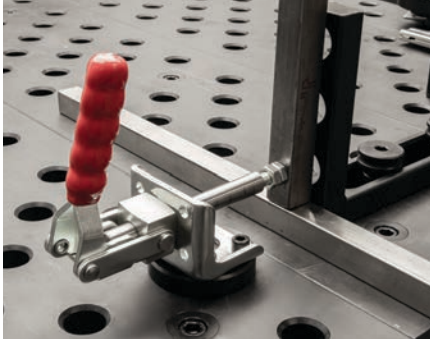


T28-97071-01

PART NO.	DESCRIPTION	WEIGHT (KG)
T28-97071-01	Mounting Base	0.7

## PUSH/PULL HORIZONTAL TOGGLE CLAMP W/ ADAPTER

Adapter base fits into all 28 mm holes. Works with various stops and squares such as T28-20255 and larger.

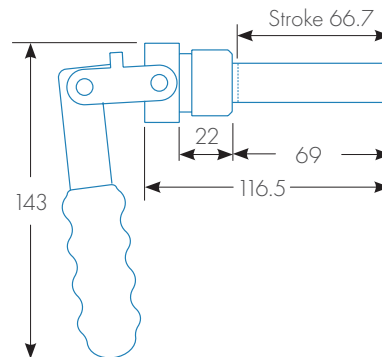
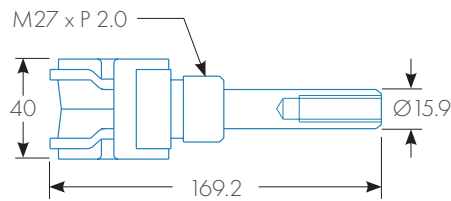


**T28-97072**

PART NO.	DIMENSION (MM)	STROKE ADJUSTMENT (MM)	HANDLE OPENS	HOLDING CAPACITY (KG)	WEIGHT (KG)
T28-97072	190 x 79 x 203	30	181 °	318	1.8

## HORIZONTAL TOGGLE CLAMP

This plunger type push/pull clamp has threaded collars for mounting in threaded, or through holes. Supplied with thin lock nuts and jam nut on the work side. Spindle supplied.



**GH-36224**

PART NO.	DESCRIPTION	WEIGHT (KG)
GH-36224	Push/Pull Horizontal Toggle Clamp	0.7
GH-36225	Mounting Bracket for GH-36224	0.4



**GH-36225**



## ADJUSTABLE REST

The Adjustable Rest is operated manually with a turn of the knurled band for minute height adjustment.

Insert into any fixturing hole on the Alpha 28 Welding Table for use as a support or rest for aligning stock at a uniform height and providing welding clearance. V-Blocks fit into the top cavity of the Adjustable Rests to support round pipes. Adjustable Rests are stackable for use with tall stock.

### THREE MOUNTING OPTIONS:

- Insert into any hole on the Alpha 28 table with the Ø28 mm Locating Post.
- Securely fasten to the tabletop for repetitive applications using the Locking Pin with cap screw (included).
- Remove the Locating Post or the Locking Pin, and place the Rest anywhere on the Alpha 28 tabletop.

PART NO.	TOP DIA. (MM)	TOP HEIGHT (MM)	WEIGHT (KG)
T28-551108	80	75 ~ 110	2.5



T28-551108

## LOCKING POST REST

The Fixed Rest features 28 mm bored hole to hold V-Blocks and V-Block Spacers.

Insert into any 28 mm fixturing hole on the Alpha28 Table for use as a support or rest for aligning stock.

PART NO.	TOP DIA. (MM)	TOP HEIGHT (MM)	WEIGHT (KG)
T28-540100	38	100	0.8
T28-540075	38	75	0.6



T28-540075

## CONE REST

Use the Cone Rest to locate and position round tubing horizontally or vertically through the centerline. The Setup Cone locates from within the tube ID [Max. 40 mm] at the tube ends, allowing for centerline location and positioning. Mount the Setup Cones on Alpha 28 Accessories using either of two interchangeable bases provided:

Horizontal clamping: Securely fasten to any 28 mm mounting hole on clamping accessories using the Locking Pin with cap screw.

Vertical clamping: Insert into any 28 mm mounting hole on clamping accessories or the tabletop, using the Locating Post.



T28-530040

PART NO.	HOLE MOUNT (MM)	DIA. (MM)	HEIGHT (MM)	MAX. TUBE SIZE (MM)	WEIGHT (KG)
T28-530040	28	42	38	40	0.4

## BEND RESTS

The Bend Rest supports round stock at bends and elbows in fixturing, preventing lateral movement and providing clamp support.

The low profile design allows use of multiple Bend Rests as needed to elevate stock, leaving ample space for clamping.

Place Bend Rests directly into any hole on the Alpha 28 Tabletop, or use in combination with Alpha 28 Rests to set at desired height to meet clearance or alignment requirements for each unique fixture.



**T28-520612**



**T28-520815**



**T28-521215**

PART NO.	ANGLE	WIDTH (MM)	MAX. TUBE SIZE (MM)	WEIGHT (KG)
T28-520612	120°	60	80	0.3
T28-520815	150°	80	120 ~ 400	0.4
T28-521215	150°	120	120 ~ 400	0.5

## V-BLOCKS

V-Blocks are used for holding round stock of different sizes.



**T28-510612**



**T28-510815**



**T28-511215**

PART NO.	DESCRIPTION	HOLE MOUNT	HEIGHT (MM)	DIA. (MM)	V DEGREE	WEIGHT (KG)
T28-510612	V-Block Ø 60 120° with screwed-in collar	M16	42	60	120	0.6
T28-510815	V-Block Ø 80 150° with screwed-in collar	M16	35	80	150	1.0
T28-511215	V-Block Ø 120 150° with screwed-in collar	M16	35	120	150	1.7

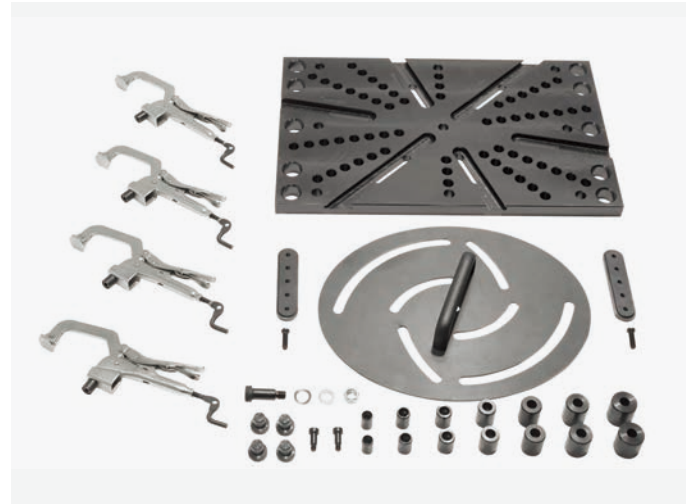
## FLANGE PLATE

Hold, accurately locate, and securely clamp down standard flanges. Guide Blocks in the Flange Clamping Plate expand or contract symmetrically to accurately locate the flange for greater weld quality. The patented Flange Clamping Plate provides full welding clearance, and allows easy removal of the finished weldment.

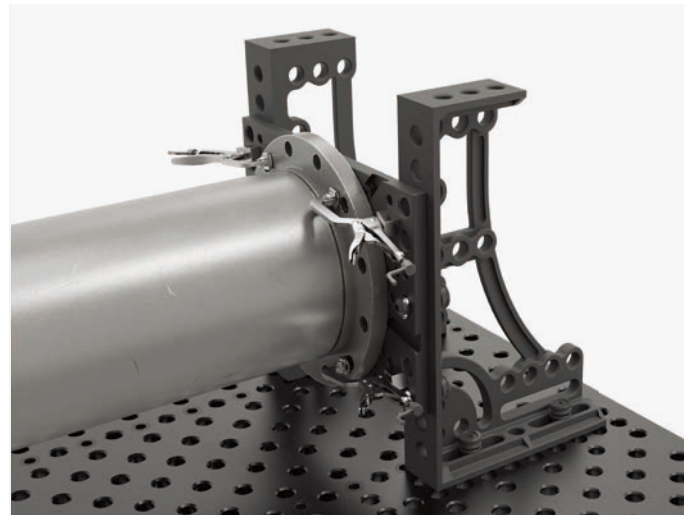
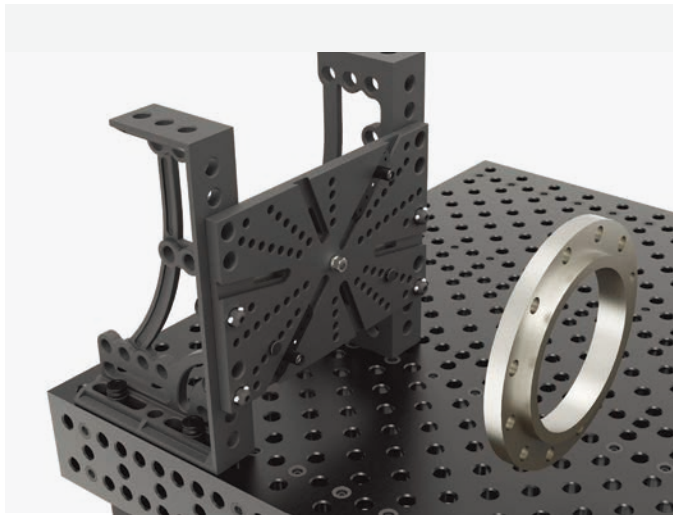
The fixture is strong and rigid, to withstand cumulative stresses resulting from welding, and holds the joined flange & pipe during cool down to prevent distortion, expansion, and contraction.

Load the flange & pipe, accurately position, and unload quickly for quality welds, maximum productivity, and repeatability.

PART NO.	PLATE DIMENSION (MM)	WEIGHT (KG)
T28-98550	550 x 350 x 25	39.5



T28-98550



## TOOL CART

The wheeled Tool Carts keep your parts organized and nearby at all times. The Tool Cart can store numerous clamps, bolts, stops and squares on the top and front, while the back side stores up to 8x clamping squares up to 800 mm in height. Comes with 2 fixed wheels and 2 swivelling castors. Assembly required.

PART NO.	LENGTH (MM)	WIDTH (MM)	HEIGHT (KG)	WEIGHT (KG)
T28-92915	640	1,070	1,110	102

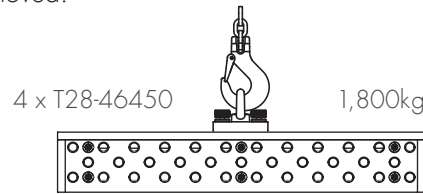


T28-92915

## LIFTING BRACKET

The Lifting Bracket with Eye Nut has a load bearing capacity of 1,800 kg and is used for transport of tables and other heavy components safely and easily. It is fastened quickly using 4 Clamping Bolts (T28-46450). Lateral forces should be avoided on the lifting bracket eye nut as this will decrease its load capacity.

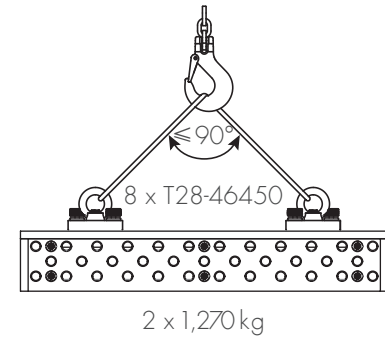
With all lifting brackets users must observe general rules and regulations for material handling safety. Users must ensure Eye Nut or Hoist Rings are fully threaded and sit flat on the bearing surface. Users must ensure clamping bolts are fully seated onto the lifting bracket so that bolts can achieve full clamping capacity. Objects should not be lifted further than 100 mm off the ground and personnel are not allowed under objects being lifted or moved.



PART NO.	LENGTH (MM)	WIDTH (MM)	HEIGHT(KG)	WEIGHT (KG)
T28-97150	150	150	25	4.7



T28-97150



## CLEANING BRUSH

This nylon brush with protecting handle is designed for cleaning 28 mm fixturing holes in Alpha 28 welding tables, blocks and squares.

The brush can be attached to your own power drill for fast cleaning.



PART NO.	WEIGHT (KG)
T28-95820	0.11



T28-95820

## TORCH HOLDER

An essential tool for any welding enthusiast or professional. It's designed to keep your welding burner safe and secure when not in use. The Torch Holder features a 28 mm pin at the base, which easily slips into any 28 mm fixturing hole on your welding table. This makes it fast, easy, and convenient to move the Torch Holder to any location on the table.










PART NO.	DESCRIPTION (MM)	WEIGHT (KG)
T28-98920	235 x 65 x 40	0.45


























T28-98920

## FIXTURING KITS

Choose a fixture kit from below or contact us for consultation on a fixture kit to meet your specific needs.

KIT 100		PART NO. T28-90101	TOTAL: 38 PC	WEIGHT: 58 KG	
					
T28-64230	T28-61416	T28-60010	T28-510612	T28-46450	T28-22155
4x	2x	2x	4x	12x	4x
					
T28-20255	T28-23183	T28-23283			
4x	4x	2x			

KIT 200		PART NO. T28-90201	TOTAL: 70 PC	WEIGHT: 105 KG	
					
T28-64230	T28-61416	T28-60010	T28-510612	T28-46450	T28-94280
8x	4x	2x	4x	24x	4x
					
T28-22155	T28-20255	T28-23183	T28-23283		
8x	8x	4x	4x		

KIT 300		PART NO. T28-90301	TOTAL: 92 PC	WEIGHT: 199 KG	
					
T28-64230	T28-61416	T28-60010	T28-60012	T28-510612	T28-46450
8x	4x	2x	2x	4x	36x
					
T28-94280	T28-22155	T28-20255	T28-23183	T28-23283	T28-32103L + 32103R
4x	8x	8x	8x	4x	1x + 1x
					
T28-13028L + 13028R					
1x + 1x					



**KIT 400**
**PART NO. T28-90401**
**TOTAL: 113 PC**
**WEIGHT: 350 KG**

**T28-64230**

12x


**T28-61416**

8x


**T28-60010**

4x


**T28-60012**

2x


**T28-510612**

8x


**T28-46450**

36x


**T28-94280**

8x


**T28-22155**

8x


**T28-20255**

8x


**T28-20501**

4x


**T28-23183**

8x


**T28-23283**

2x


**T28-32103L + 32103R**

1x + 1x


**T28-13028L + 13028R**

1x + 1x


**T28-92915**

1x

**KIT 500**
**PART NO. T28-90501**
**TOTAL: 143 PC**
**WEIGHT: 492 KG**

**T28-64230**

12x


**T28-61416**

8x


**T28-60010**

4x


**T28-60012**

2x


**T28-510612**

8x


**T28-46450**

48x


**T28-94280**

8x


**T28-22155**

12x


**T28-20255**

12x


**T28-20501**

4x


**T28-23183**

12x


**T28-23283**

4x


**T28-32103L + 32103R**

2x + 2x


**T28-13028L + 13028R**

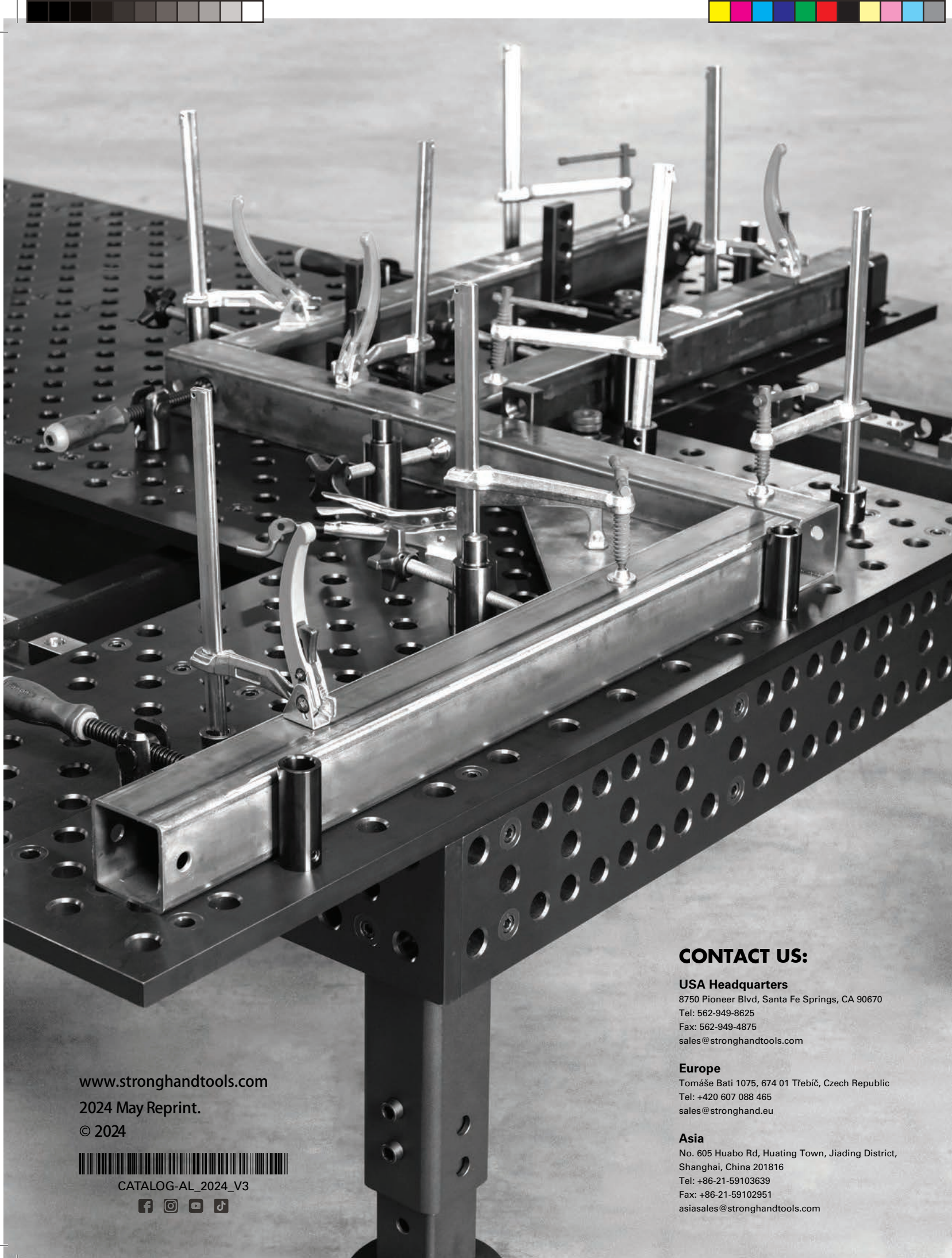
1x + 1x


**T28-18038L + 18038R**

1x + 1x


**T28-92915**

1x



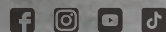
[www.stronghandtools.com](http://www.stronghandtools.com)

2024 May Reprint.

© 2024



CATALOG-AL\_2024\_V3



## CONTACT US:

### USA Headquarters

8750 Pioneer Blvd, Santa Fe Springs, CA 90670  
Tel: 562-949-8625  
Fax: 562-949-4875  
[sales@stronghandtools.com](mailto:sales@stronghandtools.com)

### Europe

Tomáše Bati 1075, 674 01 Třebíč, Czech Republic  
Tel: +420 607 088 465  
[sales@stronghand.eu](mailto:sales@stronghand.eu)

### Asia

No. 605 Huabo Rd, Huating Town, Jiading District,  
Shanghai, China 201816  
Tel: +86-21-59103639  
Fax: +86-21-59102951  
[asiasales@stronghandtools.com](mailto:asiasales@stronghandtools.com)